

Tarrawonga Coal Community Consultative Committee

P.O. Box 37
Gunnedah 2380
E: tarrawongacoalccc@gmail.com
M: 0427 723 747

12 February 2026

Dear Committee Member,

Notice is given that a meeting of the Tarrawonga Coal Community Consultative Committee will be held on **Wednesday, 18 February 2026 at the Boggabri Golf Club, Kamilaroi Highway, Boggabri commencing at 10.00 am.**

AGENDA

1. Welcome
2. Apologies:
3. Acknowledgement of Country
4. Declaration of Pecuniary or other interests
5. Observers
6. Previous meeting - Minutes of meeting of 29 October 2025 – Approved 29 November 2025
7. Actions
 - 7.1 MJS to advise DPHI of concerns expressed by a community member regarding the determination of MOD 11
8. Correspondence
 - 8.1 Whitehaven – Gunnedah Open Cut Operation: Increased Coal Haulage Modifications
9. Environmental Monitoring Report
10. Proponent's Report
11. Other Agenda Items
 - Members' questions on matters specific to the project.
13. General Business
14. Next Meeting – 13 May 2026

I look forward to your attendance and contribution at the meeting.

Yours faithfully,

Michael J. Silver OAM
Independent Chair

Minutes: Minutes of the 83rd Meeting of the Tarrawonga Coal Community Consultative Committee held at the Boggabri Golf Club, Kamilaroi Highway, Boggabri on Wednesday 18 February 2026 commencing at 10.02 am.

Members Present: Elizabeth O’Hara (EOH) – Community Representative, Mark Hathaway (MHa) – Community Representative, Lloyd Finlay (Community Representative, Wade Hudson (WH) – Gunnedah Shire Council, Matt Hollis (MH) – Tarrawonga Coal Mine, Jonathon Kool (JK)– Tarrawonga Coal Mine, Jabin De Kiezer (JdeK) - Whitehaven Coal, Online: Cr Jocellin Jansson (JJ) – Narrabri Shire Council.

Observers: Nil

Apologies: Nil

Independent Chair: Michael J. Silver OAM (MJS)

Agenda Item	Discussion	Action/By Whom
1.	Welcome and Apologies – MJS welcomed everyone to the meeting.	
2.	Acknowledgement of Country - The Chair acknowledged the Traditional Owners of the land on which the meeting is being held and their continuing connection to land, water, and culture, paying respects to their Elders past, present and emerging.	
3.	Declaration of pecuniary or other interests – EOH has a small package of WHC shares. MJS expenses as Chair are borne by TCM.	
4.	Minutes from Previous Meeting – Members noted that the minutes of the meeting of 29 October 2025 were approved on 29 November 2025.	
5.	Business Arising Nil	
6.	<p>Actions from Previous Meeting</p> <p>6.1 DPHI to be advised of concerns expressed by a community member regarding the determination of MOD 11. MJS indicated that the DPHI had been advised of the concerns. EOH again expressed concern relative to permit an increase in tonnage of coal to be hauled by trucks on the roads and delays in moving to rail haulage. MH responded that construction of rail infrastructure is a business decision of the investment group within the Whitehaven. The increase in truck tonnage is within the carrying capacity set for the haulage vehicles. MH then noted that the modification allows for an interim road haulage capacity of 3.8 million tonnes for the 2025 Calander year with no present need, for an overpass over the Kamilaroi Highway as required for the full 4.1 million tonnes annual haulage capacity. WH provided an historical overview of coal haulage along the Blue Vale Road and considerations associated with a road overpass of the Kamilaroi Highway.</p>	
7.	<p>Correspondence</p> <p>7.1 Whitehaven Coal Limited: Advising of a proposed modifications to the Tarrawonga Coal Project approval (MOD 12) and the Vickery Extension Project approval (MOD 3). MJS advised the correspondence had been distributed to the Committee.</p> <p>MH delivered a presentation on the proposed modifications. He noted the interim modification permitted up to 3.8 Mt per annum to be hauled by road without an overpass over the Kamilaroi Highway during Calander Year 2025 only. He indicated that a broad analysis of the direction forward to 2030 was being undertaken particularly regarding the viability to build infrastructure to support the Vickery project. He noted that the lead to time for infrastructure construction such as an overpass is considerable. MH then proceeded to outline the principal components of the Modifications:</p> <ul style="list-style-type: none"> • an increase in ROM coal haulage of 0.6 Mtpa along the southern section of the Approved ROM Coal Transport Route (cumulatively a total of 4.1 Mtpa ROM coal) to the Whitehaven CHPP from calendar year 2026 until 31 December 2030. 	

- change of the ROM coal haulage limit in the VCM Development Consent (SSD 7480) from financial year to calendar year to align with the TCM and Whitehaven CHPP calendar year limits.

MH advised that the intent of the modifications is to not build the road overpass but maintain the same number of traffic movements but using higher capacity within the haulage vehicles to achieve the increased coal movement. He detailed the critical issues associated with building a road overpass – cost, timeframe to build and limitations on accessibility due to floodplain issues (flood impacts).

MH added that Whitehaven is examining options to increase production to 4.1 Mt per annum without increasing impacts on the environment. This can be achieved by increasing the payload on the existing haulage vehicles.

EOH expressed the opinion that the community is paying for Whitehaven's problems. Coal prices have declined, noting that last financial year Whitehaven NSW revenue declined by 20%, despite production only declining by 3% compared to the previous year. It is a dying industry. People within the community feel that they are being burdened with the cost of this decline. She also expressed concern over safety on the haulage road particularly at dusk.

Discussion proceeded on the implications of axle loadings and the general safety of road haulage. MH indicated that haulage of 4.1 Mt per annum may not be every year and will be dependent on coal production from Vickery Coal Mine as it expands its operations.

In response to the Chair, MH advised that all Management Plans will be reviewed and discussions will occur with the relevant Council's regarding the road maintenance agreements. WH advised that the current road maintenance agreements are reviewed annually regarding cost adjustments. MH added that it is in Whitehaven's interests, and the community, to ensure Blue Vale Road is maintained to an acceptable safe standard.

LF highlighted concerns over the unacceptable standard – specifically the shoulder sealing beyond the fog line of a section [1.5 to 2 kilometres] of Rangari Road (between the private WHC haul road sections) that has been reconstructed in Narrabri Shire. Cr Jansen took the matter on notice.

MH outlined the modification process indicating the two MODs are expected to be lodged in April 2026. EOH questioned why it will be a joint modification and what the consultation process will be. MH responded that both existing consents for Vickery and Tarrawonga mines need to be amended simultaneously and the consultation process is a matter for the DPHI to determine.

MH then outlined what the likely scenario post-2030 will be with respect of the WHC CHPP and Tarrawonga mine projects. He advised that as Vickery expands in line with its existing approvals, the existing CHPP at Gunnedah will not be able to process the amount of coal extracted. Consideration will need to be given to investment to construct a new CHPP onsite at Vickery

	<p>Coal mine including associated rail load out infrastructure. It is probable that will take two years to have it and associated infrastructure in place. The decisions on investment and infrastructure are matters for the Whitehaven board.</p> <p>MH indicated that Tarrawonga Coal is currently scheduled to close in 2030 – there has been no formal decision internally at WHC on an extension to the life of mine at Tarrawonga to accommodate the time required to mine out the existing approved mines foot print beyond 2030 and subsequently achieve the approved mine closure objectives.</p>	
<p>8.</p>	<p>Proponent’s Environmental Monitoring Report <i>A copy of the Quarterly Environmental Report is attached to the minutes.</i></p> <p>MH stepped the Committee through the report.</p> <p>Noise MH advised that there were no non compliances regarding attended noise monitoring and monitoring locations.</p> <p>Blast Monitoring MH advised there had been eleven (11) blasts during the reporting period, and each had been compliant.</p> <p>Air Quality Monitoring MH provided a summary of air quality monitoring. He advised that there were no exceedances at the monitoring sites.</p> <p>The High-Volume Air Sampler (HVAS) at ‘Coomalagh’ did provide a non-compliant result – this was reported to DPHI with subsequent investigation attributing the dust result to non-mining related activity (trucks on local road and local farming activities).</p> <p>MH also commented on the real time air quality unit (TEOM) to monitor PM10 levels near the mine. EOH enquired whether PM2.5 is monitored. MH advised this is not recorded by Tarrawonga but a PM2.5 monitor is located between Vickery and Tarrawonga Mine sites.</p> <p>Ground/Surface Water MH stepped the Committee through the Water Monitoring table, noting there were no anomalies.</p> <p>Clearing No clearing undertaken to date. MH added that contrary to previous CCC meeting advice, a small amount of clearing would be required during 2026 to accommodate some mine infrastructure relocation.</p>	

Rehabilitation and Clearing

MH advised the Annual Rehabilitation Report will be submitted to the Resource Regulator in February 2026 and will subsequently be placed on the website for public availability.

MH highlighted that 53.1 hectares of rehabilitation works had been completed in 2025 made up of 30.4 hectares of landform and 22.7 of ecosystem establishment. He also reported that trees on both the north and south rehabilitation areas are looking healthy and are monitored by ecologists annually to assess the success of the rehabilitation.

EOH enquired as to the extent and nature of weed control. MH responded that control is undertaken generally in the spring/summer period with thistles and Paterson's Curse the primary problems. Weed control is monitored by an agronomists and spray programs tailored to adopt professional advice for each weed management campaign.

MH advised that it is proposed to clear approximately 5 hectares of land, not for mine advancement but to permit infrastructure placement.

Complaints

MH advised there were no new complaints during the reporting period.

Environmental Management Plans

MH advised the Tarrawonga Offset Management Plan 2025 (OMP) was submitted to the DPHI in Q1 and approved in early July 2025. This report has been made available on the public website.

The Blast Management Plan was approved by the DPHI in December 2025 whilst the BTM Air Quality Management Strategy was lodged with DPHI in November 2025.

Annual and Compliance Reporting

The Annual Review 2024 has been approved and is available to view on the Tarrawonga public website. The 2025 Annual Return will be lodged at the end of March 2026.

Tyre Disposal

MH advised that 129 HV tyres were disposed of by inpit disposal in November 2025.

JJ sought advice on the overall number of tyres disposed of at Tarrawonga Coal. She explained that Narrabri Shire Council is currently examining potential options for a tyre recycling and management facility in the Shire. MH noted that WHC prepared an options report addressing tyre disposal options for WHC in the Gunnedah Basin. The options report was developed and lodged with the NSW EPA during 2025. He invited JJ to liaise with Whitehaven on the matter. EOH added that across the BTM

CCC's there was ongoing concern regarding HV tyre disposal. MJS commented on the EPA's current approach to HV tyre management and disposal, noting that it is critical that any commercial approach is economically viable.

Annual Compliance EPBC statement

The Annual Compliance EPBC statement was submitted to DAWE in June 2025.

Annual National Pollutant Inventory (NPI) and Greenhouse Gas Emission (NGERs) Reports

MH advised the NPI and NGERs reports were submitted in September 2025, these reports are under review by the relevant agencies.

Audit

MH advised that the next Independent Environmental Audit and Independent Biodiversity Audit is expected to be conducted in June of 2026.

Approval/Licencing

MH advised an interim approval for 2025 has been acquired for Tarrawonga. Tarrawonga's MP11_0047 Modification 11 was approved on the 8th of October 2025. This modification is in relation to approved coal haulage tonnage. Coal haulage has increased by 0.3Mtpa of ROM coal from Tarrawonga and Vickery to a cumulative 3.8Mtpa, for the duration of the 2025 calendar year. MH advised that coal haulage has now returned to 3.5Mtpa as per the Project Approval.

Operation Overview

Current Safety Performance

MH presented the current safety performance with the Total Recordable Injury Frequency Rate (TIRFR) being 2.1 being lower.

Monitoring

MH noted there had been no exceedances for noise or blasting. There was one air quality exceedance, but this was not due to mining operations.

Compliance

MH advised the Blast Management Plan had been approved and the Rehabilitation Management Plan reviewed and updated.

Rehabilitation

MH indicated that 30.4 hectares of landform was completed for 2025.

Upcoming Works

MH outlined the works proposed In Q1 2026:

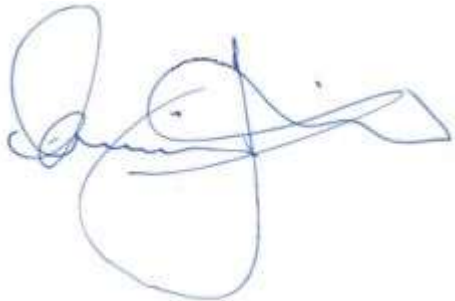
- TCM will continue to move subsoil and topsoil from the storage/clearing area into the 2026 Rehab areas.

	<ul style="list-style-type: none"> • This topsoil will be spread over the 2025 landform area that will be Seeded during Autumn / Winter 2026. • Required maintenance works will continue to be undertaken. • Monitoring will continue as per normal. • A small clearing campaign will be undertaken during Q1 for approx. 5.0Ha to support the relocation of in pit Crib Hut amenities and Go Lines to the Eastern extents of the Tarrawonga Open Cut. • Annual Reporting will occur during Q1- 2026 • 2025 / 2026 Annual Return (EPL12365) • 2026 - 2028 Forward Plan (Site Rehabilitation Planning) • 2025 Annual Review <p>EOH sought clarification on clearance protocols. EOH requested advice on processes associated with recording animals impacted and how impacted animals are managed. MH stepped through the clearing process noting the following steps:</p> <ul style="list-style-type: none"> • General pre-clearance inspection. • Ecologist pre-clearance inspections • Habitat inspections (hollows inspected) • Animals impacted recorded • Felled trees ecologist inspections <p>EOH asked whether a list of impacted animals can be provided. MH advised that this information is available in the published Annual Review document each year and available on the WHC – Tarrawonga website.</p>	
<p>9.</p>	<p>Other Agenda Items</p> <p>9.1 Air Quality Monitoring – EOH expressed concern at the lack of a co-ordinated approach to air quality management in the region. She noted the demise of the Namoi Air Quality Auditing Committee through a lack of interest.</p> <p>MH responded that air monitoring network is still operating with the various mines still submitting data to the NSW Department of Climate Change, Energy, the Environment and Water (DCCEEW). WH advised that the Upper Hunter Air Quality Monitoring Network is still operating.</p> <p>EOH suggested that the overall extent of air quality monitoring is inadequate such as the recording of PM10 over PM2.5 and the little assessment of the presence of nitrogen dioxide.</p> <p>EOH requested that the matter of air quality monitoring be placed on the agenda of the next meeting.</p> <p>9.2 Transitioning Off</p> <p>EOH commented that Tarrawonga Coal Mine is scheduled to close in 2030 – she questioned what happens after the mine closes and the impact on the community. What will be the impact on individuals and business.</p>	<p>ACTION</p> <p>That Air Quality Monitoring be placed on the agenda of the next meeting.</p>

	<p>MH provided an insight into the closure of Werris Creek Coal mine and the implications for workers and the community. He noted there is end of mine life discussions with DPHI. EOH suggested alternative economic and business opportunities need to be examined. MH suggested that despite the closure of Tarrawonga and potential implications for the town of Boggabri, the Maules Creek Coal mine and the Vickery mine will continue to operate. WH indicated Gunnedah Shire Council has been conscious of the potential mine closures and the need to support alternative industry and commercial operations to address possible population impacts.</p> <p>MJS commented that he would be discussing the implications of the mine closure with both Narrabri and Gunnedah Councils.</p>	
10.	<p>General Business Nil</p>	
11.	<p>Next Meeting The next meeting is scheduled for 13 May 2026</p>	

Meeting closed at 11.40 am.

Approved:



Michael J. Silver OAM
Independent Chair

19 March 2026

Appendix 1: Actions

Action No	Description	Date Raised	Page No	Status
1	TCM to explore feasibility of presenting a slide in future of injuries falling / rising	14.02.24	3	COMPLETED 13.11.24
2	TCM to provide link to Sustainability Report	14.02.24	3	COMPLETED 15.05.24
3	MW to investigate if Social Impact Plan was available	14.02.24	4	COMPLETED 15.05.24
4	MJS to advise Ms Druce that the proposition should be discussed with NSC and RFS.	15.05.24	2	COMPLETED 06.06.24
5	That the Tarrawonga Coal Mine Rehabilitation Objectives be presented at the October 2024 CCC meeting.	29.08.2024	3	COMPLETED 13.11.224
6	JdeK to advise whether DPHI will publicly exhibit proposed haulage Modification.	03.09.2025	5	COMPLETED 29.10.25
7	MJS to advise DPHI of concerns expressed by a community member regarding the determination of MOD 11	29.10.25	3	COMPLETED 16.02.26
8	MJS to place Air Quality Monitoring on the agenda of the next meeting.	18.02.26	7	

Tarrawonga Coal Mine Community Consultative Committee Meeting #84

**Quarterly Environmental Monitoring Report
October 2025 – December 2025**



Photo taken December 2025 showing rehabilitation progression of the Southern Rehab

This report has been prepared for the Community Consultative Committee (CCC) meeting to show Environmental monitoring performance at Tarrawonga Coal Mine (TCM) for the reporting period from October 1, 2025, to December 31, 2025. Maps with all the monitoring locations are available in *Appendix A*.

Noise Monitoring

Attended Noise Monitoring was conducted during this period.

Attended noise monitoring was conducted at the “Bungalow” (TN4), “Barbers Lagoon” (TN3) and “Matong” (TN2) properties from 15th and 19th December 2025. Noise criteria for the mine is 35dB(A) Leq (15 min) for all operating times.

Results below show that noise emissions from the mine did not exceed operational noise criteria at the “Barbers Lagoon”, “Bungalow” or “Matong” monitoring locations for any monitoring events during the monitoring period.

(See below summary tables extracted from Tarrawonga Coal Mine Noise Monitoring – Q4 December 2025)

Table 1 TCM Operational Noise Monitoring Results – 15 December 2025 (Evening)				
Location	Time	Total dB(A), Leq (15 min)	Wind speed / direction / PSC	Identified Noise Sources
Matong – TN2	9:17 pm	40	49 / 1.6 / E	Insects (40), TCM (<20)
Barbers Lagoon – TN3	7:47 pm	43	313 / 1.3 / D	Insects (43), plane (30), TCM (<20)
Bungalow – TN4	8:29 pm	33	261 / 1.5 / D	Insects (33), TCM (<20)

Table 2 TCM Operational Noise Monitoring Results – 15-16 December 2025 (Night)				
Location	Time	Total dB(A), Leq (15 min)	Wind speed / direction / PSC	Identified Noise Sources
Matong – TN2	10:01 pm	37	257 / 1.9 / E	Insects (37), TCM (<20)
Barbers Lagoon – TN3	12:37 am	48	139 / 5.0 / E	Car (48), insects (35), wind (33), TCM (<20)
Bungalow – TN4	11:22 pm	35	100 / 3.1 / D	Insects (32), wind (28), TCM (<20)

Table 3
TCM Operational Noise Monitoring Results – 16 December 2025 (Day)

Location	Time	Total dB(A), Leq (15 min)	Wind speed / direction / PSC	Identified Noise Sources
Matong – TN2	2:52 pm	38	285 / 1.9 / B	Birds (37), wind (30), TCM (<20)
Barbers Lagoon – TN3	11:25 am	32	155 / 3.6 / A	Birds (30), plane (26), TCM (<20)
Bungalow – TN4	1:02 pm	39	8 / 1.8 / B	Insects (38), wind (32), TCM (<20)

Table 4
TCM Operational Noise Monitoring Results – 16 December 2025 (Evening)

Location	Time	Total dB(A), Leq (15 min)	Wind speed / direction / PSC	Identified Noise Sources
Matong – TN2	9:21 pm	39	82 / 5.0 / D	Insects (37), wind (33), TCM (<20)
Barbers Lagoon – TN3	7:50 pm	50	47 / 2.7 / D	Birds (50), wind (40), TCM (<20)
Bungalow – TN4	8:33 pm	39	173 / 2.8 / D	Insects (36), Wind (35), TCM (<20)

Table 5
TCM Operational Noise Monitoring Results – 16-17 December 2025 (Night)

Location	Time	Total dB(A), Leq (15 min)	Wind speed / direction / PSC	Identified Noise Sources
Matong – TN2	10:01 pm	38	81 / 5.3 / D	Wind (37), insects (30), TCM (<20)
Barbers Lagoon – TN3	1:30 am	38	117 / 3.3 / D	Insects (36), wind (32), TCM (<20)
Bungalow – TN4	11:49 pm	40	94 / 4.1 / E	Insects (40), wind (34), TCM (<20)

Table 6
TCM Operational Noise Monitoring Results – 17 December 2025 (Day)

Location	Time	Total dB(A), Leq (15 min)	Wind speed / direction / PSC	Identified Noise Sources
Matong – TN2	4:25 pm	36	118 / 1.6 / A	Birds (34), wind (30), TCM (<20)
Barbers Lagoon – TN3	1:03 pm	43	353 / 1.8 / A	Traffic (41), birds (35), wind (32), TCM (<20)
Bungalow – TN4	2:40 pm	37	353 / 1.5 / A	Birds (36), wind (31), TCM (<20)

Table 7
TCM Operational Noise Monitoring Results – 17 December 2025 (Evening)

Location	Time	Total dB(A), Leq (15 min)	Wind speed / direction / PSC	Identified Noise Sources
Matong – TN2	9:30 pm	37	79 / 1.6 / E	Insects (37), wind (25), TCM (<20)
Barbers Lagoon – TN3	7:36 pm	47	145 / 1.5 / E	Cars (45), birds (42), TCM (<20)
Bungalow – TN4	8:21 pm	41	46 / 1.7 / E	Insects (39), wind (35), TCM (<20)

Table 8
TCM Operational Noise Monitoring Results – 17-18 December 2025 (Night)

Location	Time	Total dB(A), Leq (15 min)	Wind speed / direction / PSC	Identified Noise Sources
Matong – TN2	10:02 pm	41	62 / 1.5 / E	Insects (41), wind (32), TCM (<20)
Barbers Lagoon – TN3	12:27 am	41	17 / 2.2 / D	Insects (41), wind (25), TCM (<20)
Bungalow – TN4	11:17 pm	31	99 / 2.2 / D	Insects (30), wind (22), TCM (<20)

Table 9
TCM Operational Noise Monitoring Results – 18 December 2025 (Day)

Location	Time	Total dB(A), Leq (15 min)	Wind speed / direction / PSC	Identified Noise Sources
Matong – TN2	1:58 pm	45	340 / 1.9 / A	Wind (43), insects (39), TCM (<20)
Barbers Lagoon – TN3	10:26 am	45	326 / 2.4 / B	Cars (43), birds (39), TCM (<20)
Bungalow – TN4	12:10 pm	37	266 / 2.1 / A	Birds (34), wind (33), TCM (<20)

Table 10
TCM Operational Noise Monitoring Results – 18 December 2025 (Evening)

Location	Time	Total dB(A), Leq (15 min)	Wind speed / direction / PSC	Identified Noise Sources
Matong – TN2	9:06 pm	41	23 / 1.5 / F	Insects (41), TCM (<20)
Barbers Lagoon – TN3	7:34 pm	42	16 / 1.3 / D	Birds/insects (32), TCM (<20)
Bungalow – TN4	8:13 pm	52	335 / 0.4 / E	Insects (52), TCM (<20)

Table 11
TCM Operational Noise Monitoring Results – 18-19 December 2025 (Night)

Location	Time	Total dB(A), Leq (15 min)	Wind speed / direction / PSC	Identified Noise Sources
Matong – TN2	10:00 pm	41	36 / 2.4 / D	Insects (41), TCM (<20)
Barbers Lagoon – TN3	12:26 am	41	72 / 2.9 / D	Insects (40), sheep (31), TCM (<20)
Bungalow – TN4	11:16 pm	38	13 / 1.4 / D	Insects (37), traffic (30), TCM (<20)

Table 12
TCM Operational Noise Monitoring Results – 19 December 2025 (Day)

Location	Time	Total dB(A), Leq (15 min)	Wind speed / direction / PSC	Identified Noise Sources
Matong – TN2	2:25 pm	43	327 / 0.8 / A	Car (42), birds (34), TCM (<20)
Barbers Lagoon – TN3	10:57 am	42	309 / 2.1 / D	Birds (40), insects (36), TCM (<20)
Bungalow – TN4	12:39 pm	40	45 / 2.1 / A	Birds (38), insects (33), wind (29), TCM (<20)

Noise from the mine must not exceed 45 dB(A) L1 (1 min) between 10 pm and 7 am. This criterion is to minimise the potential for sleep disturbance because of individual loud noises from the mine.

Results of attended monitoring show that the measured L1 (1 min) noise level did not exceed sleep disturbance criteria.

Table 13 TCM Sleep Disturbance Monitoring Results – 15-16 December 2025 (Night)					
Location	Time	dB(A) L1 (1 min) ¹	dB(A) L1 (1 min) ²	L1 Source	Wind speed / direction / PSC
Matong – TN2	10:01 pm	40	<20	Insects	257 / 1.9 / E
Barbers Lagoon – TN3	12:37 am	52	<20	Car	139 / 5.0 / E
Bungalow – TN4	11:22 pm	41	<20	Insects	100 / 3.1 / D

1. L1 (1 min) – total measured level.

2. L1 (1 min) – TCM noise only.

Table 14 TCM Sleep Disturbance Monitoring Results – 16-17 December 2025 (Night)					
Location	Time	dB(A) L1 (1 min) ¹	dB(A) L1 (1 min) ²	L1 Source	Wind speed / direction / PSC
Matong – TN2	10:01 pm	42	<20	Wind	81 / 5.3 / D
Barbers Lagoon – TN3	1:30 am	38	<20	Insects	117 / 3.3 / D
Bungalow – TN4	11:49 pm	43	<20	Wind	94 / 4.1 / E

Table 15 TCM Sleep Disturbance Monitoring Results – 17-18 December 2025 (Night)					
Location	Time	dB(A) L1 (1 min) ¹	dB(A) L1 (1 min) ²	L1 Source	Wind speed / direction / PSC
Matong – TN2	10:02 pm	43	<20	Insects	62 / 1.5 / E
Barbers Lagoon – TN3	12:27 am	45	<20	Insects	17 / 2.2 / D
Bungalow – TN4	11:17 pm	35	<20	Insects	99 / 2.2 / D

Table 16 TCM Sleep Disturbance Monitoring Results – 18-19 December (Night)					
Location	Time	dB(A) L1 (1 min) ¹	dB(A) L1 (1 min) ²	L1 Source	Wind speed / direction / PSC
Matong – TN2	10:00 pm	45	<20	Insects	36 / 2.4 / D
Barbers Lagoon – TN3	12:26 am	44	<20	Insects	72 / 2.9 / D
Bungalow – TN4	11:16 pm	38	<20	Insects	13 / 1.4 / D

The real time noise monitor located on the “Coomalgah” property remains a management tool, so the noise criteria are not applicable at that site. Levels of noise recorded at that location are managed according to the Noise Management Plan and Trigger Action Response Plan.

Blast Monitoring

Blasting Results

Since 2006, there have been 1396 blasts (until 31/12/2025) at TCM. 11 of these were during the reporting period.

Table 1 below displays the peak ground pressure and overpressure values recorded and dates at the compliance monitor on Coomalgah property during the quarter.

TCM overpressure and ground vibration for the quarter was compliant and did not exceed the blasting criteria declared in the project approval and Blast Management Plan (BMP).

Table 1 - Max Peak Overpressure and Ground Pressure for the Quarter

Monitor Location	Date	Max. Peak Overpressure (dB)	Criterion (dB)	Date	Max. Peak Ground Pressure (mm/s)	Criterion (mm/s)
Coomalgah	25/11/25	115.3	120	13-Sep-25	0.68	10

Air Quality Monitoring

Dust Deposition Gauge Results

Standard Australia AS/NZS 3580.10.1:2016, "Methods for sampling and analysis of ambient air – Determination of particulate matter – Deposited matter – Gravimetric Method," classifies deposited dust as insoluble solids. Therefore, TCM tests air quality monthly at mine-owned sites for indicative purposes, to infer compliance, against the limit of 4 g/m²/month.

Table 3 shows deposited dust gauge results over 12 months. All the dust monitors are located on project related or WHC owned land; as such compliance criteria (4g/m²/month) do not apply. While deposited dust trends remain steady during the reporting period (refer graph in *Appendix B*), some monitors are displaying non-mine related particulate matter deposition more regularly than others. Non-mine related particulate matter could be attributed to organic matter (such as leaves, mice, frogs, insects or bird faeces that fall in to the bottles), or they may be in farming locations, so during some months dust levels may be higher due to harvesting. To mitigate contamination from bird faeces, spikes have been added to the top of each dust gauge unit to deter birds from perching.

Table 2 - Deposited Dust Gauge Results [g/m2/month]

MONTH	TEMPLEMORE (EB-4)	BOLLOL CREEK STN (EB-5)	AMBARDIO (EB-6)	TARRAWONGA (EB-7)	PINE GROVE (EB-9)	TARRAWONGA MINE (EB-10)	TARRAWONGA MINE (EB-11) ¹	TARRAWONGA MINE (EB-14)	TARRAWONGA MINE (EB-15)	JERALONG NORTH (EB-16)
Jan-25	5.3c	1.8	0.8	1.3	1.3	4.3c	2.8	2.8	1.1	3.1c
Feb-25	3.0	1.6	0.9	1.2	0.6	1.9	4.4	2.9	1.2	5.5c
Mar-25	1.4	0.9	0.5	0.5	0.7	0.7	2.6	1.1	1.3	1.4
Apr-25	1.2	1.2	0.8	0.4	1.9	0.7	4.0	3.6	1.2	3.7
May-25	1.1	1.4	1.0	1.2	1.1	4.9	5.3	7.4c	1.9	0.9
Jun-25	1.1	1.1	0.7	0.6	0.7	0.9	5.5	4.3c	0.7	1.5
Jul-25	1.7	1.2	0.2	0.2	0.3	0.8	1.4	4.0c	0.6	0.5
Aug-25	4.2	0.8	0.2	0.4	0.6	0.8	4.3	1.3	0.7	0.6
Sep-25	1.4	1.1	0.6	1.1	0.8	4.2c	5.6	3.4	1.5	0.9
Oct-25	1.2	2.2	0.9	1.4	0.8	4.3c	3.8	3.1	3.2c	0.7
Nov-25	3.7c	3.1	1.9	3.0c	1.9	1.9	4.7	4.5c	3.2c	7.6c
Dec-25	5.1c	1.9	2.2	1.2	1.2	5.3c	2.7	3.7	6.2c	2.9
12 MONTH ROLLING AVERAGE	2.5	1.5	0.9	1.0	1.0	2.6	3.9	3.5	1.9	2.4

C Analysis done/ field comments on these bottles concluded that they are contaminated, often with low ash/insoluble matter. Often noted on field sheets are bird droppings, insects and plant matter. These are now excluded from the average calculation.

+ bottles not compliant for DDG testing, so results are not to be assessed against criteria alone. Still used to calculate average

¹DDG bottle on the fence line between TCM and BCM ROM.

^{N/A} bottle was removed with a fence by land occupant. No result available.

High Volume Air sampler (PM10) Results

The High Volume Air Sampler (HVAS) installed at Coomalgah property monitors levels of Particle Matter under 10 micron (PM₁₀). It operates for 24hr every 6 days. **Table 3** shows that all 24hr average values recorded for this quarter are below 50µg/m³ with the exception of an elevated result obtained on the 9th October. This result was notified to the NSW Department of Planning, Housing and Infrastructure and the results investigated. Investigation findings attributed the dust result to a non-mining related – localised dust source.

Table 3: HVAS PM10 24hr Quarterly Average levels

Date	24hr averaged PM10 (µg/m ³)	Criterion 24hr average (µg/m ³)	Comments
3/10/2025	15.1	50	
9/10/2025	167		
15/10/2025	21.6		
21/10/2025	21.7		
27/10/2025	22.1		
2/11/2025	11.1		
8/11/2025	9.5		
14/11/2025	20.1		
20/11/2025	16.0		
26/11/2025	12.8		
2/12/2025	1.3		
8/12/2025	8.6		
14/12/2025	5.5		
20/12/2025	25.9		
26/12/2025	14.9		

* results pending - lab report delayed.

Real-time Air monitoring (PM₁₀)

A real time air quality unit (TEOM) is located at the “Flixton” property to monitor PM₁₀ levels in ambient air, as per the current Air Quality and Greenhouse gas Management Plan. It is an operational management tool and dust levels nearing or reaching the nominated criteria will trigger actions onsite to assess the source of dust and modify operations if it is determined to be related to Tarrawonga operations.



Figure 1: TEOM installed at Flixton property

Three portable dust (PM₁₀) monitors have been utilised since Nov 2018 to improve the real-time dust monitoring network and assist the operation to mitigate any potential dust generated by the operation.



Figure 2: Portable and real-time dust monitor installed at TCM in November 2018

Water Monitoring

Groundwater

Routine groundwater monitoring results undertaken during 2025, are shown in **Table 4** (refer to graphs in *Appendix C*).

Table 4: Groundwater results summary

Site	Date	SWL (mbgl)	pH (units)	Elect. Conductivity (µS/cm)
MW1	March 25	6.44	7.03	3,050
	~July 25	6.43	7.15	3,340
	September 25	6.42	7.46	3,310
	December 25	6.39	7.3	2790
MW2	March 25	5.18	7.06	585
	~July 25	3.59	7.00	599
	September 25	3.58	7.46	474
	December 25	4.04	24.9	7.42
MW4	March 25	8.69	7.08	3,140
	~July 25	8.51	7.35	3,250
	September 25	8.46	7.43	3,210
	December 25	8.46	24.2	7.81
MW5	March 25	3.84	7.09	1,276
	~July 25	2.78	7.42	946
	September 25	2.43	7.53	1,873
	December 25	2.98	26.9	7.88
MW8*	March 25	12.77	Casing blocked	Casing blocked
	~July 25	12.41		
	September 25	12.16		
	December 25	8.59		

*Bore casing blocked historically. Investigations as to whether this bore is required for sampling purposes to be re-established are planned for the next financial year.

~Monitoring occurred 2nd and 3rd of July instead of June due to adverse weather conditions.

Surface Water

Water storage onsite is expected to be sufficient for at least the next 12 months. TCM undertook 1 controlled discharge events on the 5th of August 2025. 30ML total was discharged through Licensed Discharge Points at these times.

Tarrawonga recorded 722.8mm of rain in 2025.

Table 5: Annual rainfall

2024	Jan	Feb	Mar	Apr	May	Jun	Jul	Aug	Sep	Oct	Nov	Dec	Total
Monthly Rain (mm)	71.4	57.2	26	107	39.2	54.2	45.2	62.4	53.4	46	74	61.2	697.2
Cumulative (mm)	71.4	128.6	154.6	261.6	300.8	355	400.2	462.6	516	562	636	697.2	
2025	Jan	Feb	Mar	Apr	May	Jun	Jul	Aug	Sep	Oct	Nov	Dec	Total
Monthly Rain (mm)	50.2	36.4	181	101.2	64.8	21.2	73.8	77.0	39.8	38.4	57.8	41.2	722.8
Cumulative (mm)	50.2	86.6	267.6	308.8	373.6	394.8	468.6	545.6	585.4	623.8	681.6	722.8	

Rehabilitation and Clearing

Rehabilitation

The Annual Report will be submitted in February 2026, to close our rehabilitation commitments from 2025. This report will be made available on our website once complete and lodged with the NSW Resource Regulator.

The Forward Program will also be submitted at this time and our commitments for this calendar year (2026) and the two beyond will also be made available on our website. The completed rehabilitation at Tarrawonga was 53.1ha for the 2025 calendar year, made up of approximately 30.4Ha of Landform (completed by Dec 2025) and 22.7Ha of Ecosystem Establishment (completed by July 2025).

Trees on both the North and South rehab areas continue to successfully establish and grow in our historical rehabilitation areas. Ecologists attended site during November to assess the success of the rehabilitation. The resulting report assists in building a maintenance schedule on the rehabilitation areas for the coming years. TCM has also seen successful growth of the recently established ecosystem and establishment of tree plantings in previous rehab areas. Weed control work has also been undertaken to aid the success of TCM's rehabilitation areas.



Figure 3 South Rehab – Southern Rehab area after tree planting (Dec 2025).



Figure 4 New landform area with Northern Rehab Area after topsoil and stag trees behind (Dec 25)

Clearing

By the close of 2025, TCM had completed annual clearing during the Autumn clearing window. As per the Forward Program 12.9 ha was scheduled to be cleared, however only 8 ha was actually cleared during this time due to pit progression being reprogrammed. This was cleared and completed by the required date of 30th of April 2025.

Complaints

No complaints were received during this quarterly period. Three complaints received for 2025 in total.

#	Date of Complaint	Method	Category	Nature of Complaint	Tarrawonga response
1	7/3/2025	Complaints Line	Blasting	A complaint was received regarding a strong sulphur smell and loud noise following a blast at Tarrawonga Mine site.	The complainant was contacted and advised that the blast observed was within compliance approved monitoring limits and within required weather conditions for blasting at Tarrawonga.
2	7/3/2025	Complaints line	Blasting	A complaint was received regarding a loud noise following a blast at Tarrawonga Mine site that scared birds in the area.	The complainant was contacted and advised that the blast observed was within compliance approved monitoring limits for blasting at Tarrawonga.
3	21/3/2025	Complaints Line	Traffic	A complaint was received regarding a Tarrawonga mine worker who overtook the complainant in an unsafe manner whilst using a road not authorised for general mine related traffic.	The incident was investigated by Tarrawonga coal. All mine workers and contractors have been advised of the need to travel to and from work in a safe manner and only use approved roads whilst travelling to or from the mine site.

Environmental Management Plans

TAR Management Plans

The Tarrawonga Offset Management Plan 2025 (OMP) was submitted to the DPHI last in Q1 and approved in early July 2025. This report has been made available on the public website.

All Management Plans have been reviewed in the reporting period as a trigger from the submission of the Annual Review. The Blast Management Plan was submitted to the DPHI in June 2025 and was approved during December 2025. The Rehabilitation Management Plan (RMP) has also been updated during October 2025 and is publicly available on the Tarrawonga website.

BTM Strategies

The BTM Air Quality Management Strategy was lodged with NSW DPHI in November 2025 and is awaiting departmental review and or approval.

Annual and Compliance Reporting

Annual Review and Annual Return Reports

The Annual Return was submitted in February and March consecutively. The Annual Review 2025 has been approved during the 2025 and is available to view on the Tarrawonga public website.

Tyre Disposal

TCM disposed of 129 HV tyres in November 2025. These were disposed of in the TN Pit as per approval conditions, and will be reported in the Annual Return for the EPA in March 2026.

Annual Compliance EPBC statement

The Annual Compliance EPBC statement was submitted to DAWE in June 2025.

Annual National Pollutant Inventory (NPI) and Greenhouse Gas Emission (NGERs) Reports

TCM has submitted information for the NPI and NGERs reports in September 2025, this report is under review.

Audits - Compliance

Tarrawonga underwent their Independent Environmental Audit and Independent Biodiversity Audit, in June of 2023. These audits are required by the Project Approval PA11_0047, and EPBC Act respectively.

The next audit will be conducted on a three-year cycle, expected in June of 2026.

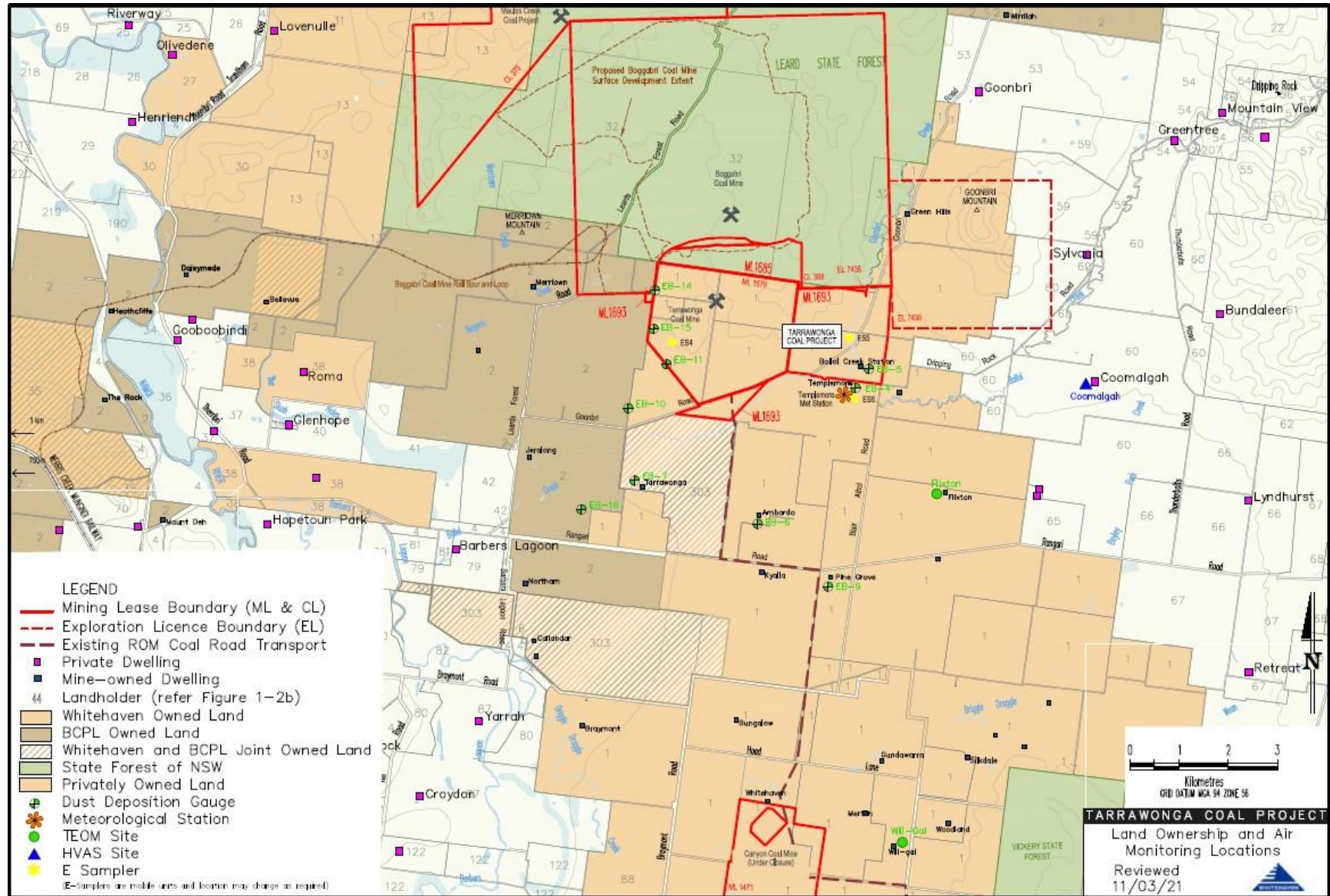
Approvals and Licencing

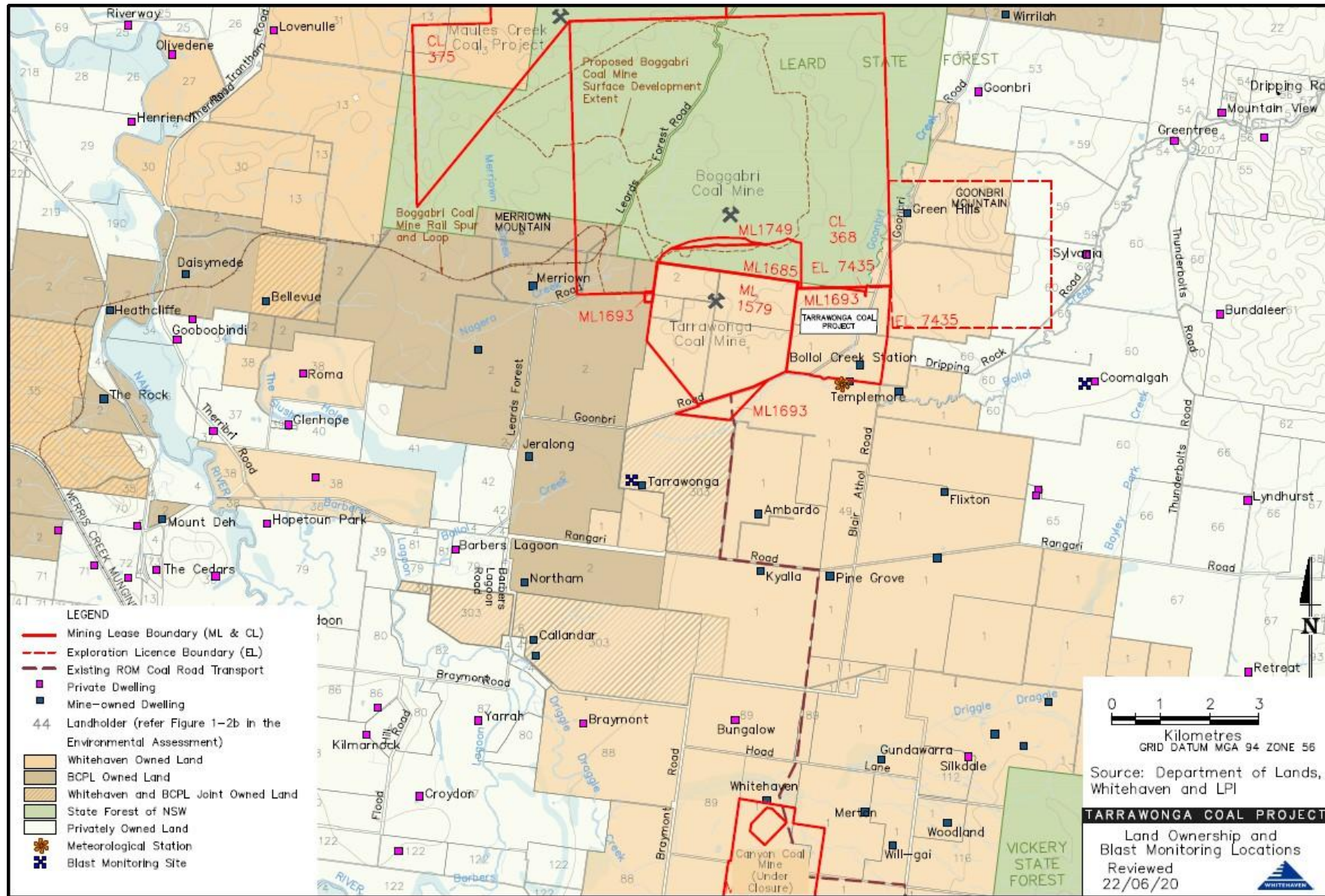
An interim approval for 2025 has been acquired for Tarrawonga. Tarrawonga's MP11_0047 Modification 11 was approved on the 8th of October 2025. This modification is in relation to approved coal haulage tonnage. Coal haulage has increased by 0.3Mtpa of ROM coal from Tarrawonga and Vickery to a cumulative 3.8Mtpa, for the duration of the 2025 calendar year. Total GOC haulage for the 2025 calendar year totaled 3.76Mt with approximately 1.64Mt of this total hauled from Tarrawonga.

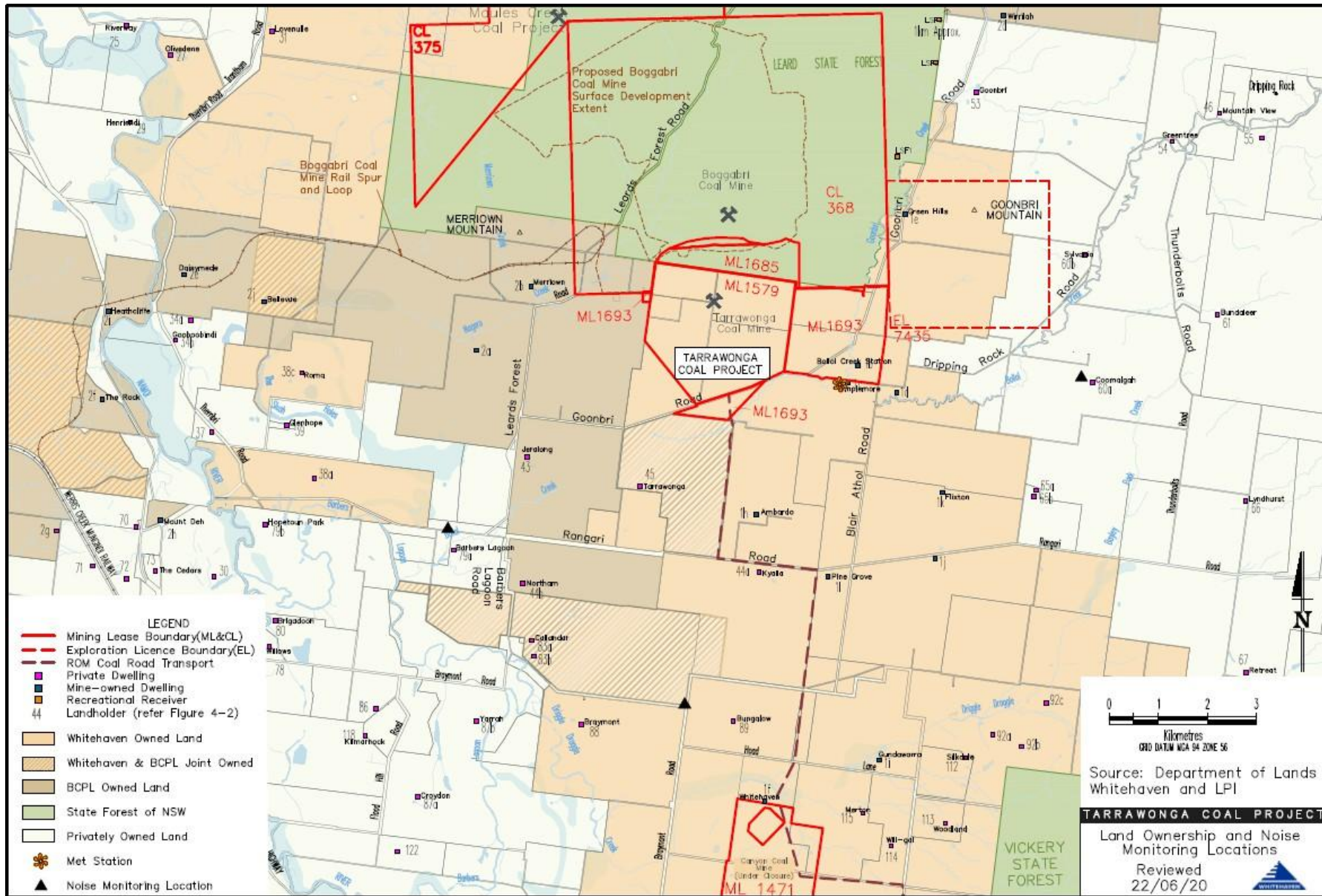
Coal haulage will return to 3.5Mtpa for the 2026 calendar year as per the Project Approval.

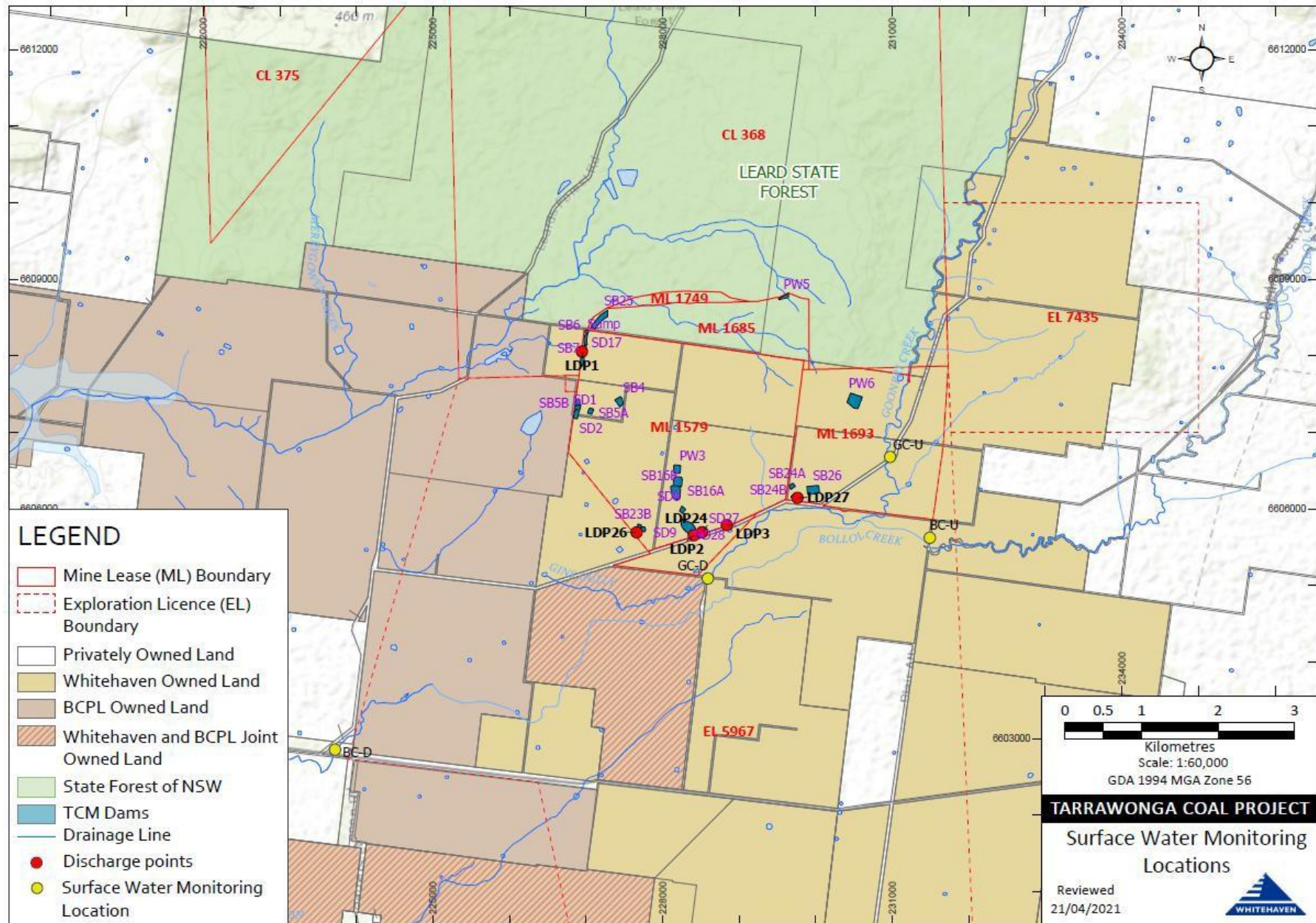
A modification is planned for 2026 to increase road haulage across the GOC operations.

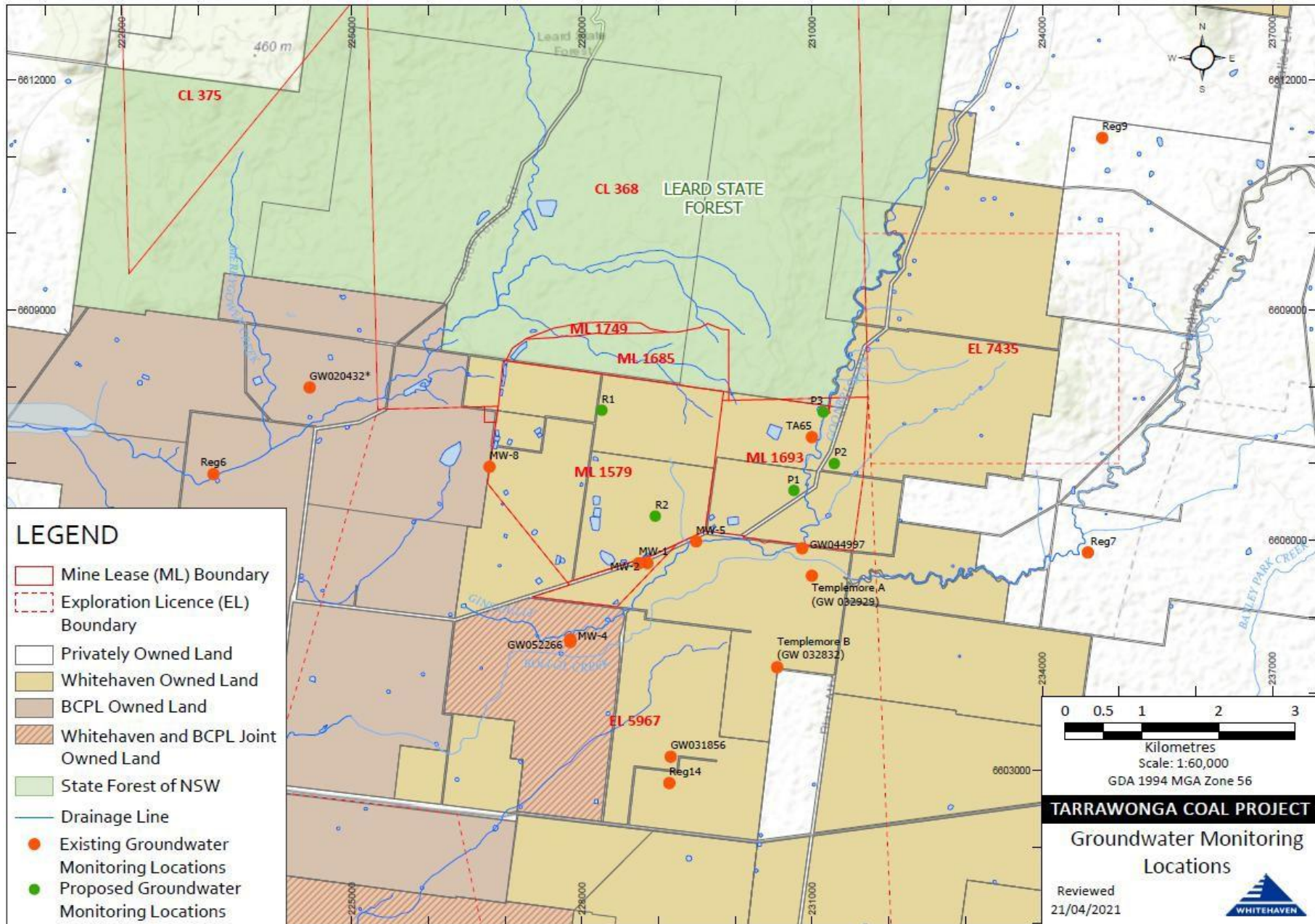
Appendix A





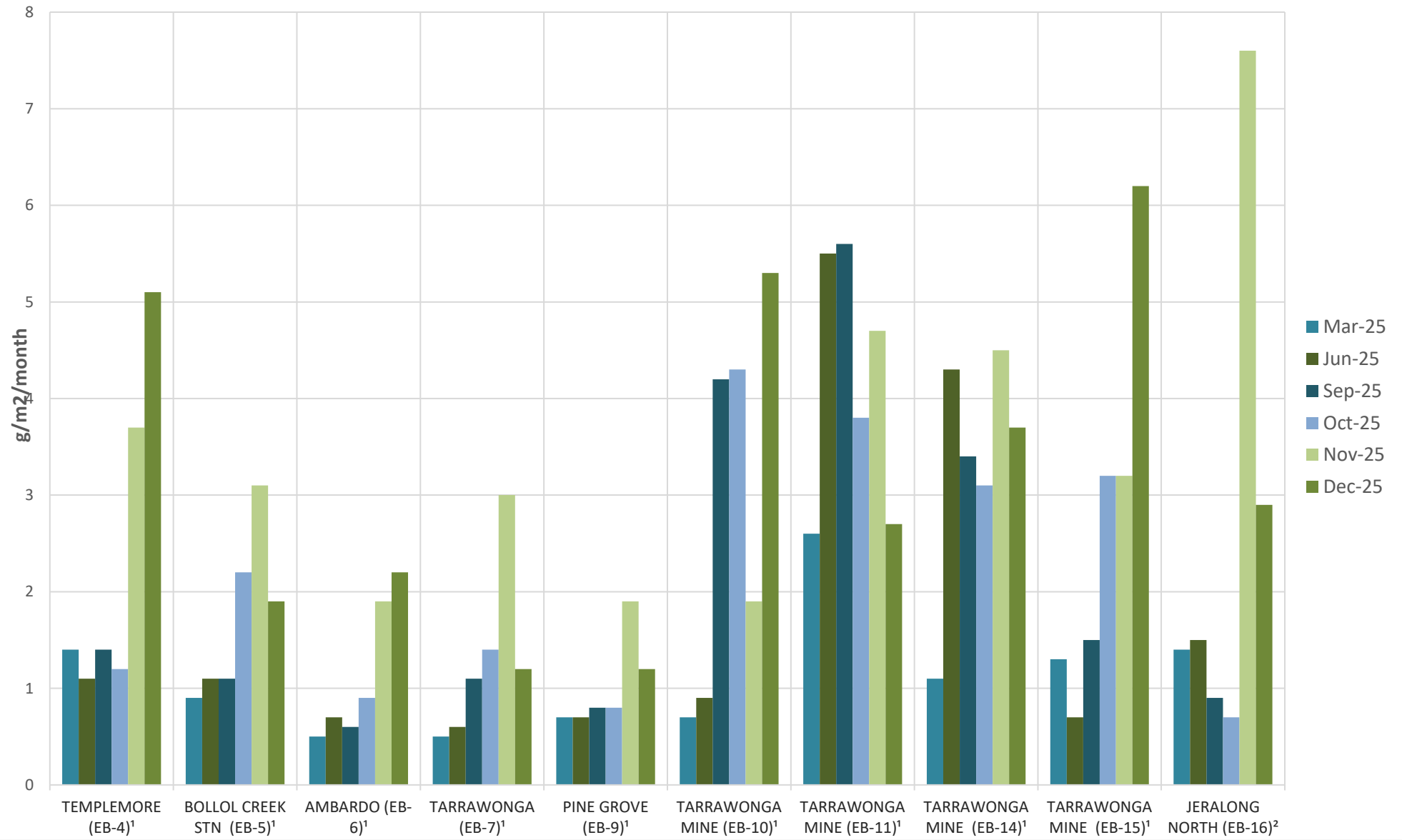




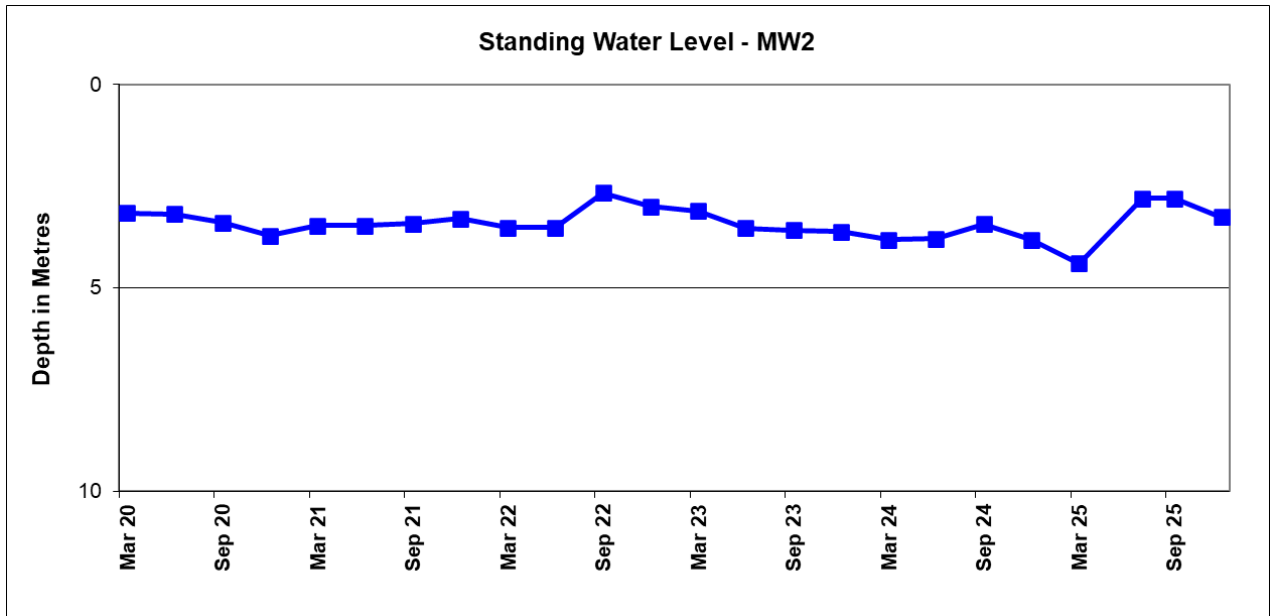
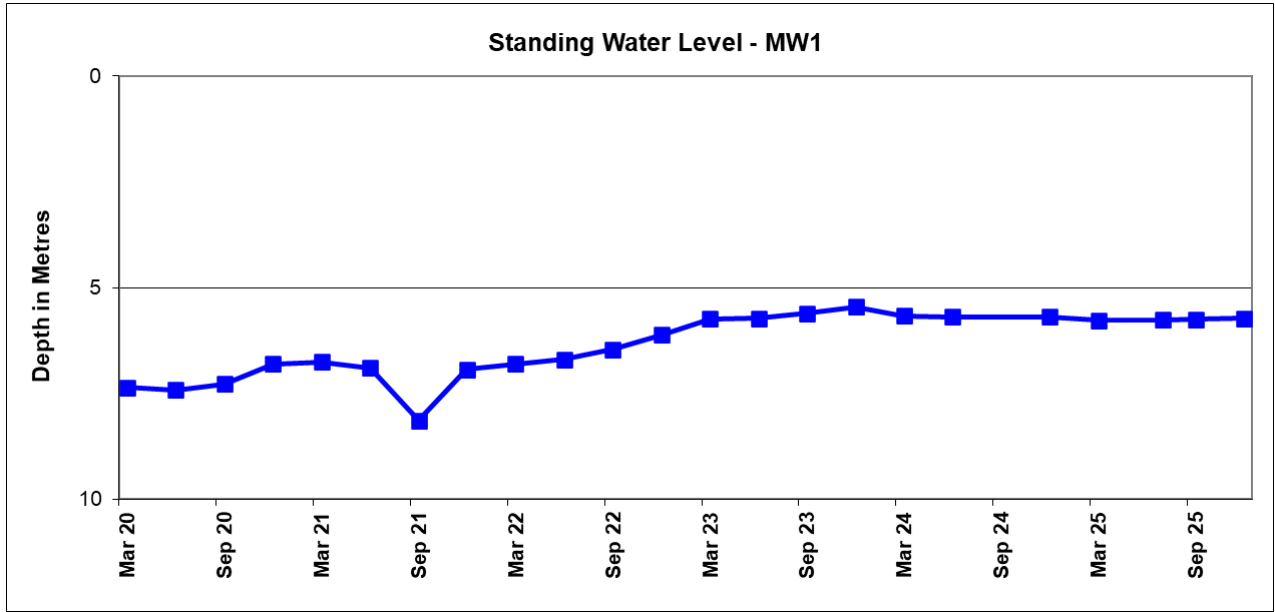


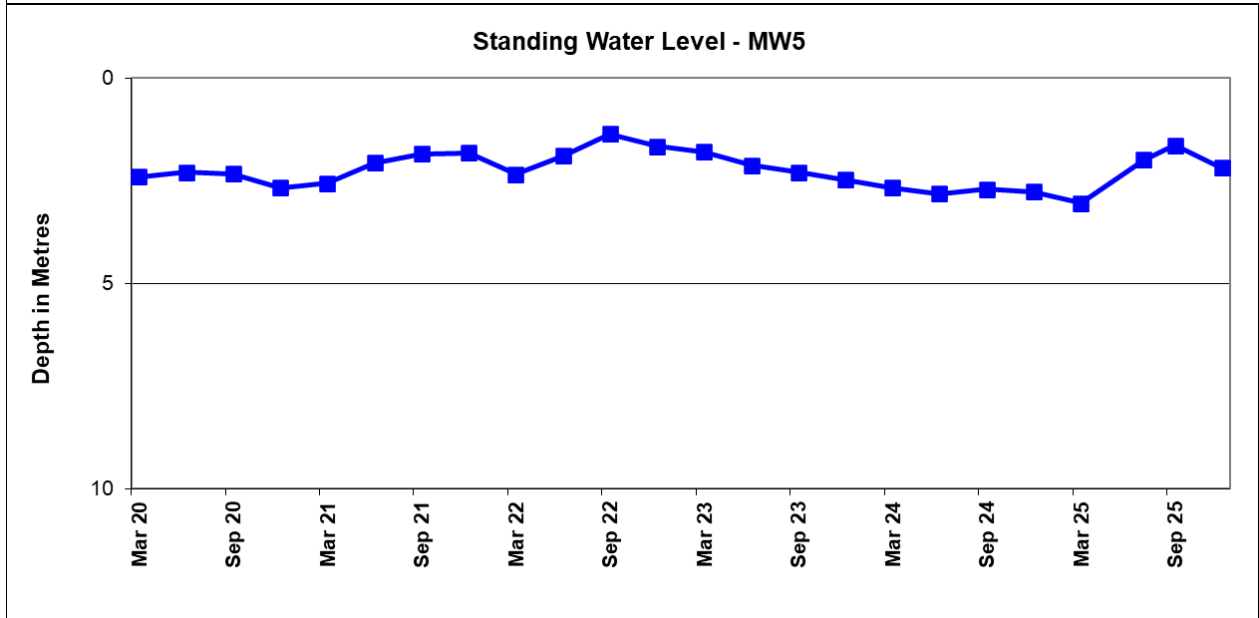
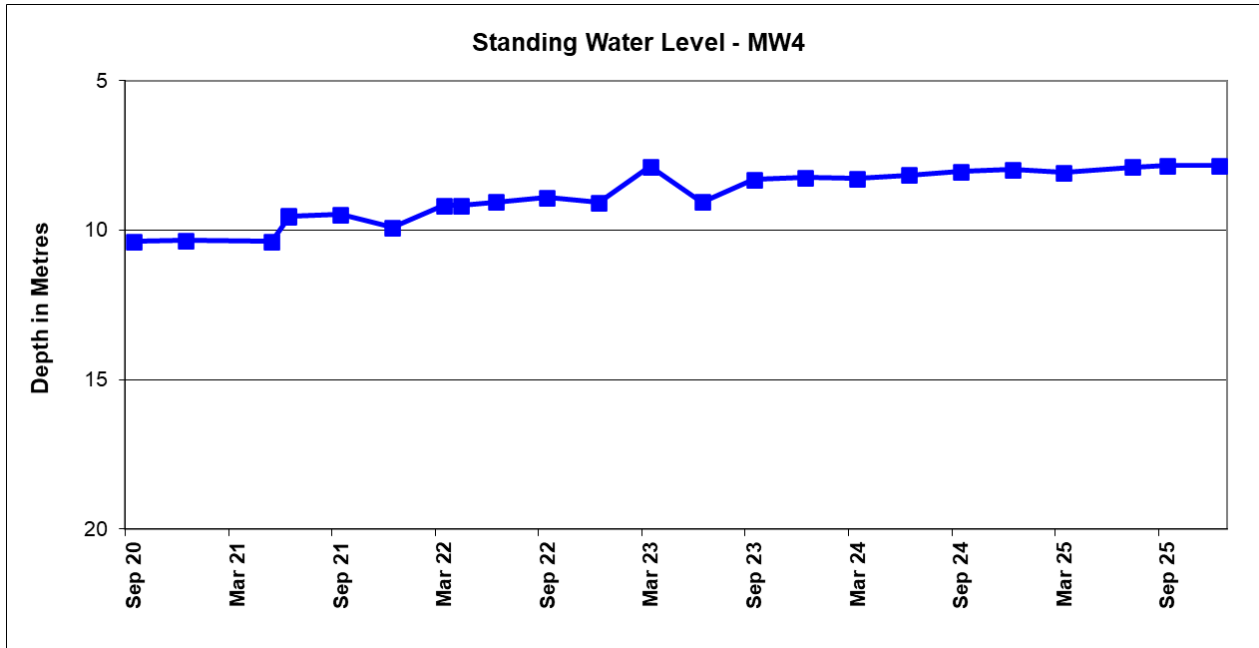
Appendix B

Deposited Dust Gauge Results- Quarterly rolling average [g/m²/month]



Appendix C





GOC Proposed 4.1 Mtpa Haulage Modification

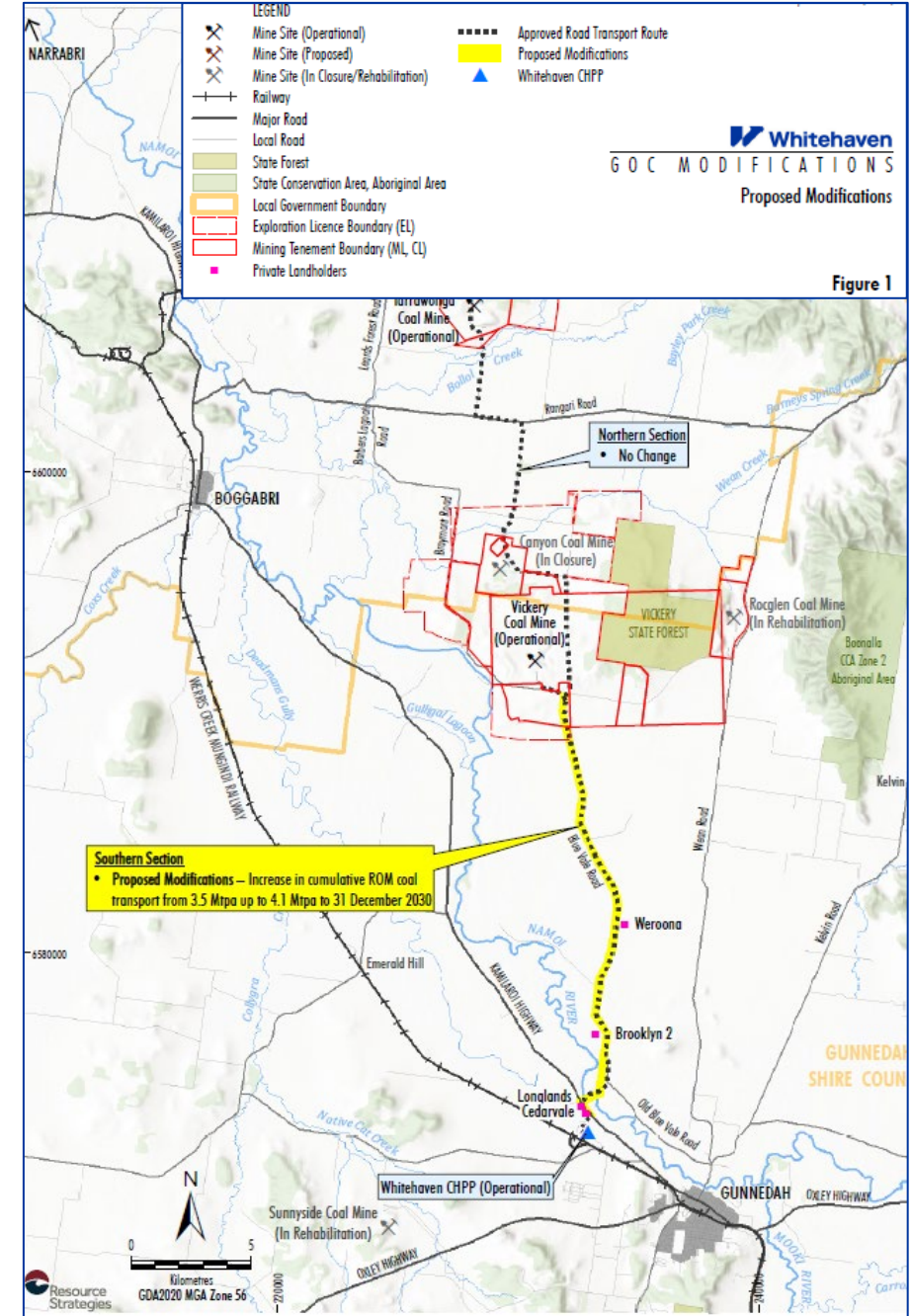
CCC Meeting Q1 2026

Project Description

- A temporary increase to haul 3.8 Mtpa was approved in quarter 4 of 2025 calendar year. Whitehaven has identified an opportunity to increase the cumulative ROM coal road haulage limit along the southern section of the Approved ROM Coal Transport Route from 3.5 Mtpa to 4.1 Mtpa for calendar years 2026 to 2030.
- The proposed ROM coal road haulage limit would align with the maximum approved ROM coal processing limit of 4.1 Mtpa at the Whitehaven CHPP (DA 0079-2002 [as modified]). Additionally, the Modifications would be aligned with the consented life for Tarrawonga Coal Mine and Whitehaven CHPP (i.e. 31 December 2030).
- Modification sought via section 4.55(2) of the EP&A Act.

The Modifications would not change the following components of GOC operations:

- Daily and hourly ROM road haulage trips on the Approved ROM Coal Transport Route.
- Mining operations at the approved GOC operations.
- Surface disturbance at the approved GOC operations or Whitehaven CHPP (e.g. to facilitate transport or stockpiling of ROM coal, product coal or coal rejects).
- Mine life(s), employment numbers, mining activities or other surface activities associated with the approved GOC operations or Whitehaven CHPP.
- Approved haulage hours.
- ROM coal transport route(s) from the GOC operations to the Whitehaven CHPP or existing domestic customers.
- Coal reject transport route(s) from the Whitehaven CHPP to VCM or TCM for incorporation into the final landforms.



Environmental Assessment Updates

- Scoping Letter has been prepared and submitted to NSW Department Planning Housing and Infrastructure (DPHI).
- Modification includes Vickery Extension Project (SSD 7480) as Modification 3 and Tarrawonga Coal Mine (MP11_0047) as Modification 12.
- Consultation to occur with agencies and stakeholders.
- Whitehaven is now preparing a Modification Report, including specialist assessments, that will cover both sites which will be lodged via the DPHI portal and made available to the public at the below links:
 - <https://www.planningportal.nsw.gov.au/major-projects/projects/mod-3-coal-haulage-modification>
 - <https://www.planningportal.nsw.gov.au/major-projects/projects/tarrawonga-coal-mine-mod-12>



7 January 2026

Department of Planning, Housing and Infrastructure
Attention: Stephen O'Donoghue, Director Resource Assessments
4 Parramatta Square
12 Darcy Street
Parramatta NSW 2150

Via email: stephen.odonoghue@planning.nsw.gov.au

Dear Mr O'Donoghue,

RE: **GUNNEDAH OPEN CUT OPERATIONS: VICKERY EXTENSION PROJECT (SSD 7480) AND TARRAWONGA COAL MINE (11_0047) – COAL HAULAGE MODIFICATIONS (MOD 3 & MOD 12) – SCOPING LETTER**

Introduction

Whitehaven Coal Limited (Whitehaven) owns the following open cut coal mining operations located in the Gunnedah Coalfield, New South Wales (NSW) (Figure 1):

- Tarrawonga Coal Project (referred to as the Tarrawonga Coal Mine [TCM]) (Project Approval [11_0047]) (as modified) – approved under Part 3A of the NSW *Environmental Planning and Assessment Act 1979* (EP&A Act) on 22 January 2013; and
- Vickery Extension Project (VEP) (Development Consent [SSD 7480]) (as modified) – approved under Part 4 of the EP&A Act on 12 August 2020.

On 8 October 2025, a delegate of the Minister for Planning and Public Spaces modified Project Approval 11_0047 and SSD 7480 to temporarily increase the maximum run-of-mine (ROM) coal road haulage limit from 3.5 million tonnes per annum (Mtpa) to 3.8 Mtpa during calendar year 2025. The maximum ROM coal road haulage limit in these approvals will revert to 3.5 Mtpa from end of financial year 2026, without the construction of the Kamilaroi Highway Overpass.

Whitehaven has identified an opportunity to utilise existing infrastructure and ROM coal haulage fleet at its Whitehaven coal handling and preparation plant (CHPP), TCM, and VEP to achieve a ROM coal production rate of up to 4.1 Mtpa for calendar years 2026-30 inclusive. The current ROM coal road haulage limits specified in the TCM and VEP approvals were originally introduced as part of the conditioning of the Vickery Coal Project and Tarrawonga Coal Project (and subsequent TCM Mod 1). Since these approvals, Whitehaven has adopted higher payload trucks meaning it is capable of hauling 4.1 Mtpa of ROM coal from TCM and VEP while maintaining daily and hourly trips below those previously assessed.

Whitehaven is seeking approval under section 4.55(2) of the EP&A Act to increase the cumulative ROM coal road haulage limit along the southern section of the Approved ROM Coal Transport Route from 3.5 Mtpa to 4.1 Mtpa for the calendar year period 2026 to 31 December 2030 without constructing the Kamilaroi Highway Overpass (Figure 1).

The proposed ROM coal road haulage limit would align with the maximum approved ROM coal processing limit of 4.1 Mtpa at the Whitehaven CHPP (DA 0079-2002 [as modified]). Additionally, the Modifications would be aligned with the consented life for TCM and Whitehaven CHPP (i.e. 31 December 2030).

The purpose of this Scoping Letter is to provide an overview of the Modifications, identify the matters that will require further assessment (including the proposed approach to assessment) and planned engagement that will be carried out during the preparation of the Modification Report. The Modification Report would be prepared in accordance with the State Significant Development Guidelines (DPHI, 2024a), in particular the *State significant development guidelines - preparing a modification report* (DPE, 2022c).

This Scoping Letter seeks confirmation from the Department of Planning, Housing and Infrastructure (DPHI) of the approval pathway, assessment scope and consultation requirements for the Modifications.

Strategic Context

Whitehaven commenced mining operations at the VEP under SSD 7480 in October 2023. Since then, existing Whitehaven mobile mining fleet have been transferred from the TCM to the VEP to increase ROM coal production at the VEP. Since establishing the box cut at the VEP, the production rate has continued to increase as ROM coal can be accessed at a lower strip ratio than at the TCM. With the improved mining efficiency, the capacity of the mobile mining fleet is able to support a cumulative ROM coal production from the VEP and TCM of 4.1 Mtpa in 2026.

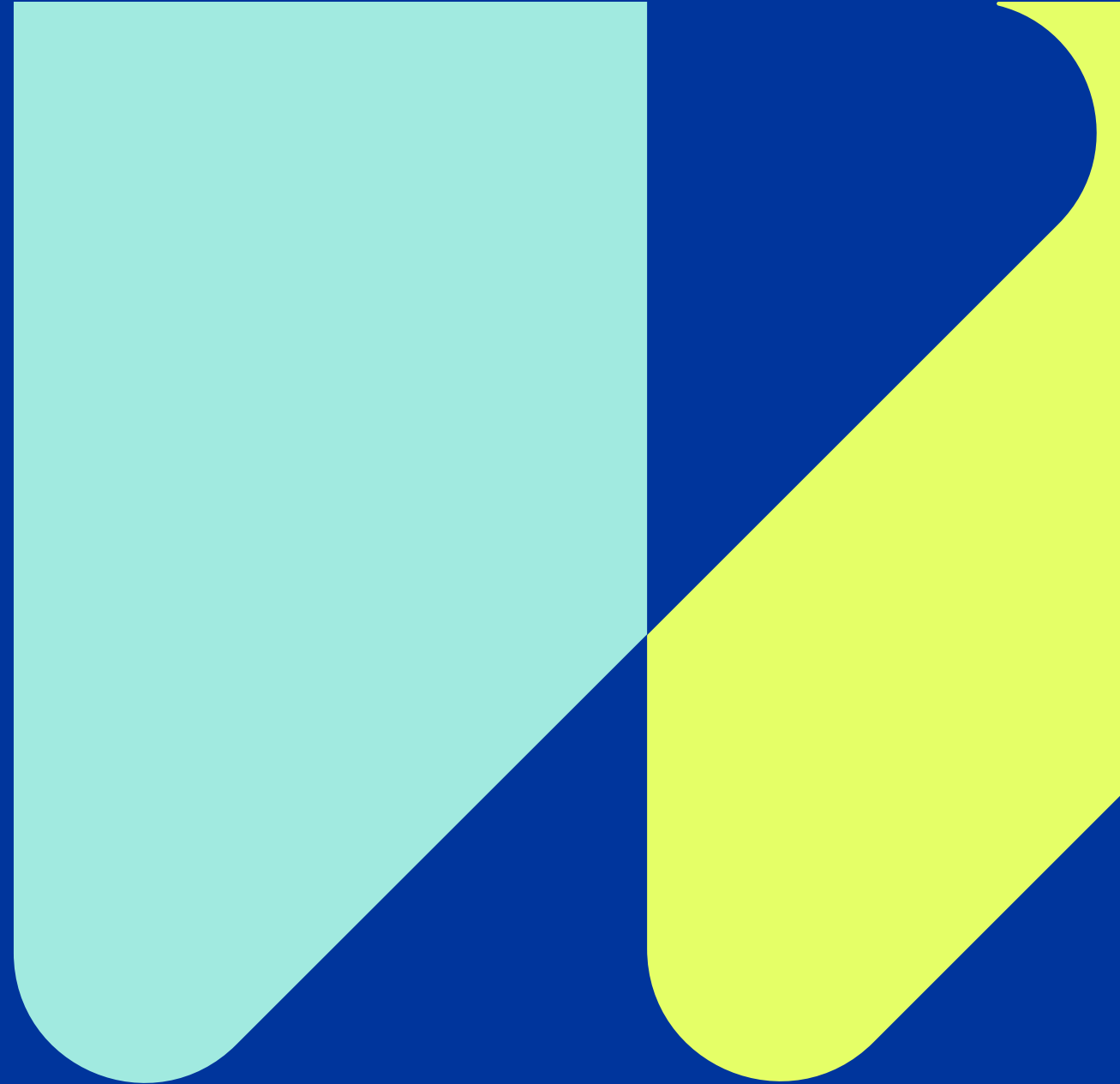
Whitehaven Coal Limited ABN 66 124 425 396
231 Conadilly Street, Gunnedah NSW 2380

P 02 6741 9300
PO Box 600, Gunnedah, NSW 2380

info@whitehavencol.com.au
whitehavencol.com.au

1

Thank you



OPERATION OVERVIEW Q4 – CY25

Oct – Dec 2025

Tarrawonga Coal Mine



CONTENTS

1. PREVIOUS MEETING ACTIONS	03
2. SAFETY PERFORMANCE	04
3. MONITORING	05
4. COMPLIANCE	06
5. REHABILITATION	07
6. ENVIRONMENT	08
7. COMING UP	09

PREVIOUS MEETING ACTIONS

None





CURRENT SAFETY PERFORMANCE

SAFETY RECORD

TRIFR <i>12-month rolling</i>	2.1
LTI Free Days <i>13/11/2022 Fitter broke left leg being hit by moving object</i>	1191
RWDI Free Days <i>20/06/2023 CMW twisted ankle</i>	973
MTI Free Days <i>22/12/2025: Operator has slipped and hurt his shoulder when inspecting dozer work area</i>	57
Safehaven Rule Breach Free Days <i>Hazard: 17/11/2025 – While dozer 902 was moving a large rock off the Boggy Bypass RDT 689 passed within 20m without making pos coms</i>	92

Safety is Everyone's Responsibility



MONITORING

Q4 CY25 SUMMARY

- **Noise**
 - No exceedances in Q4 Attended Noise Monitoring
- **Blasting**
 - All blasts this quarter were within blasting criteria.
 - 1396 blasts up until 30th of December since TCM operations began. 11 of which were within the reporting period.
- **Air**
 - Dust deposition remained steady during the reporting period
 - Operational monitoring systems had no exceedances
 - HVAS Dust Exceedance (October 2025). Not attributed to Mining Operations.
- **Water**
 - TCM recorded 137.4 mm of rain during Q4, 722.8 mm rain in total for CY2025.
 - No offsite discharge of surface water occurred during the reporting period.

For a detailed description of the monitoring results please see the monitoring report provided.



COMPLIANCE

Q4 CY25 SUMMARY

- During this quarter the following updates occurred:
 - Tarrawonga Blast Management Plan 2025 (BMP) approved
 - Rehab Management Plan review and update to conform to updated Resource Regulator Form and Way Template.

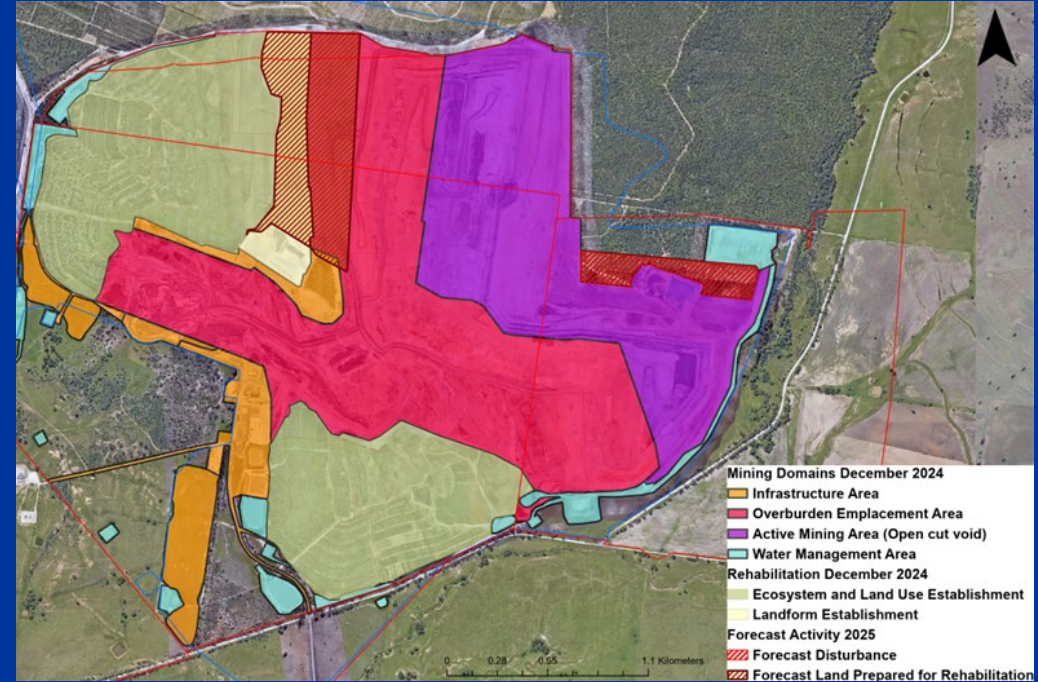


REHABILITATION

Q4 CY25 SUMMARY

During Q3:

- TCM completed work on the 2025 landform area, with target of 30.4 ha achieved by the end of CY2025
- Continued growth and monitoring of recent tree plantings
- Our 2025 ecosystem establishment area has grown a successful pioneering groundcover with native species germinating below the cover crop.
- Weed control works have been undertaken on rehab areas and stockpiles.
- All ecosystem establishment was completed by June 30 2025.



red indicates polygon that is to achieve ecosystem establishment by the close of December 2026

TCM completed required ecosystem establishment target of 22.7 ha (actual complete 23.9 ha) and Landform area of 30.5Ha



ENVIRONMENT

Q4 CY25 SUMMARY

3 complaints in total for CY25

- No complaints this quarter



TARRAWONGA – COMING UP

Q4 CY25 SUMMARY

- In Q1 2026:
 - TCM will continue to move subsoil and topsoil from the storage/clearing area into the 2026 Rehab areas.
 - This topsoil will be spread over the 2025 landform area that will be Seeded during Autumn / Winter 2026.
 - Required maintenance works will continue to be undertaken.
 - Monitoring will continue as per normal.
 - A small clearing campaign will be undertaken during Q1 for approx. 5.0Ha to support the relocation of in pit Crib Hut amenities and Go Lines to the Eastern extents of the Tarrawonga Open Cut.
- Annual Reporting will occur during Q1- 2026
 - 2025 / 2026 Annual Return (EPL12365)
 - 2026 - 2028 Forward Plan (Site Rehabilitation Planning)
 - 2025 Annual Review



Thank you

